

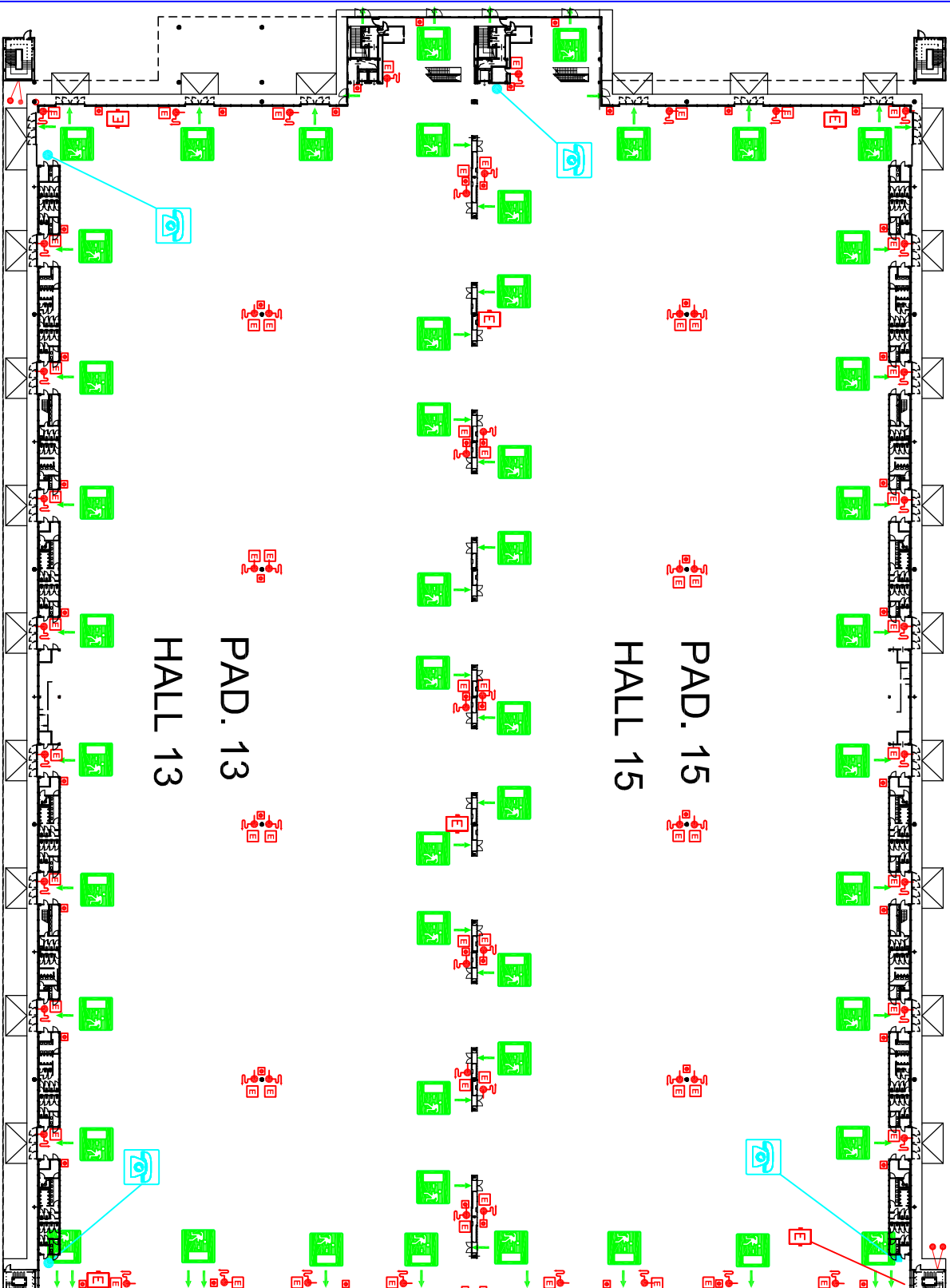
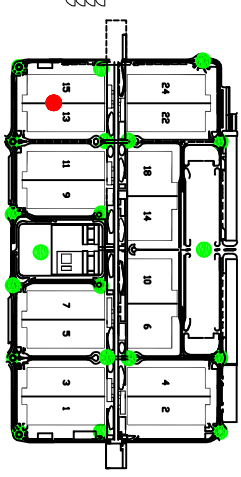
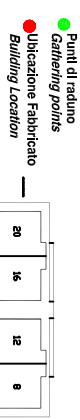
# PIANO DI EVACUAZIONE

## EVACUATION PLAN

PAD. 13/15 - PIANO TERRA +0.00

HALL 13/15 - GROUND FLOOR +0.00

Planimetria generale Quartiere Fiera  
General plan of Fairground



### LEGENDA

- ESTINTORE  
FIRE EXTINGUISHER
- IDRANTE A MURO UNI 45  
WALL HYDRANT UNI 45
- ATTACCO AUTOPOMPA V.V.F.  
CONNECTION FOR FIRE BRIGADE TRUCK PUMP
- ARMADIO ANTINCENDIO  
FIRE EQUIPMENT CABINET
- ALLARME ANTINCENDIO  
FIRE ALARM
- PERCORSO DI FUGA  
ESCAPE ROUTE
- PUNTI DI RADUNO  
GATHERING POINTS
- USCITA DI EMERGENZA  
SAFETY EXIT
- TELEFONO  
TELEPHONE
- VOI SIETE QUI  
YOU ARE HERE

**NON USARE L'ASCENSORE  
IN CASO DI INCENDIO  
DO NOT USE THE LIFT**

### IN CASO DI EMERGENZA:

IN CASE OF EMERGENCY

- 1- CHIAMARE IL NR.02/4997.7210 (O) TRAMITE LINEE INTERNE (L.NR.7210)  
PLEASE CALL TEL. NR.02/4997.7210 (OR INTERNAL NR.7210)
- 2- DIRIGERSI VERSO LE USCITE  
GO TOWARDS THE EXITS
- 3- SEGUIRE ORDINAVAMENTE I PERCORSI INDICATI  
FOLLOW IN AN ORDERLY WAY THE INDICATED ESCAPE ROUTES
- 4- MANTENERE LA CALMA  
KEEP YOUR COOLNESS
- 5- SEGUIRE LE ISTRUZIONI DEGLI ADDETTI ANTINCENDIO  
FOLLOW THE INSTRUCTIONS OF THE STAFF